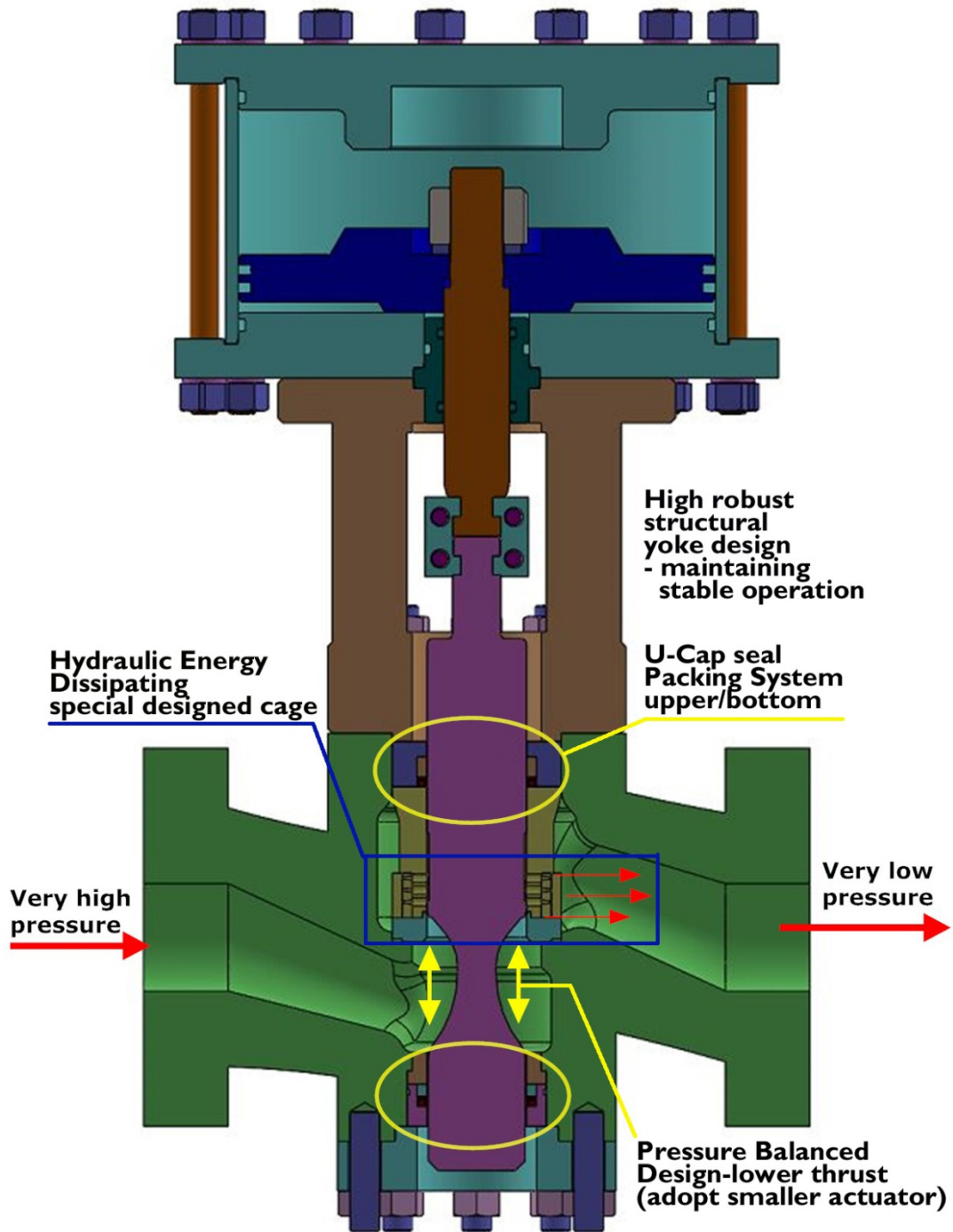


KVT - Special Valve Series, Model KXB/SM

High Pressure Quick Changeover Valve for Steel Mill Plant, Descaling system

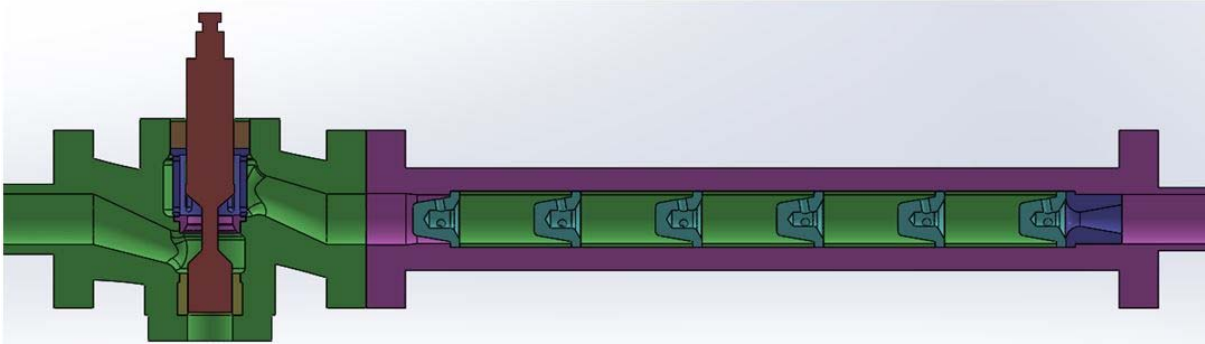
Design Features



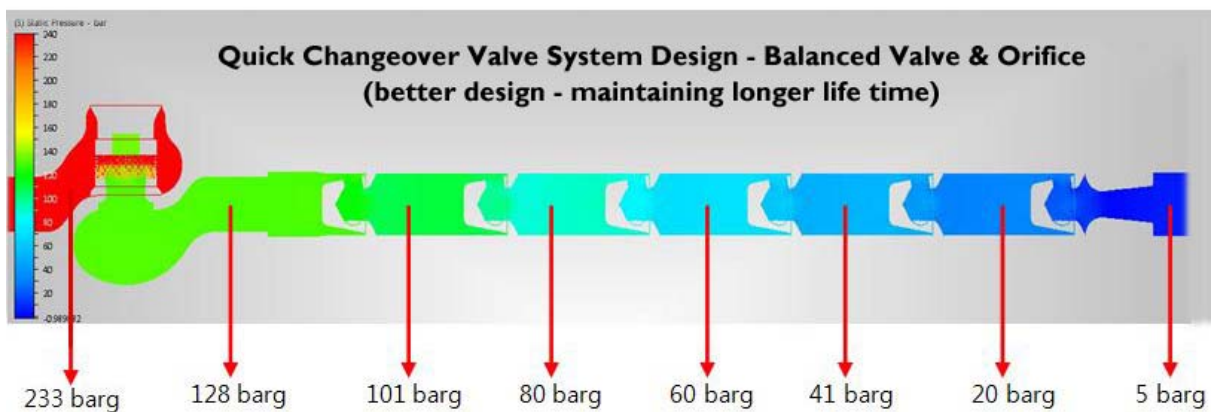
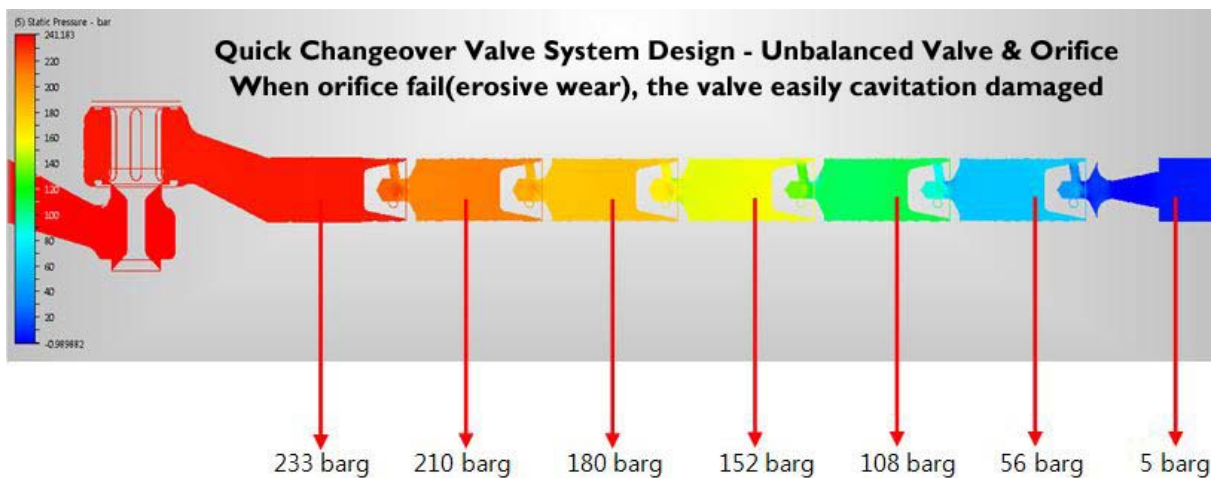
Model KXB/SM

Quick Changeover Valve System Configuration for High Pressure differential System

When the system $\Delta P > 200\text{bar}$, the high ΔP quick changeover valve system must consist of valve & restriction orifice(KVT product model KSO-MCM Series) as shown on below arrangement.



If to use lower ΔP changeover valve, all of ΔP have to cover in the restriction orifice. KVT recommend the system high ΔP take share in the valve(40%) & orifice(60%) respectively



Selection Guideline

High Pressure Quick Changeover Valve, Product Code System

Model - Operator - Size - Pressure class - End connection - Body material options
KXB P 1B AH R A
(KXBP1BAHRA)

- Operator(actuator) option

Pneumatic Piston Actuator : P
Hydraulic Piston Actuator : H

- Valve size option(only 4 sizes available. for other size please consult KVT)
DN100(4") : 1A, DN125(5") : 1B, DN150(6") : 1C, DN200(8") : 2A

- Pressure class option

up to 300barg service : AH
up to 450barg service : AI
up to 600barg service : AJ

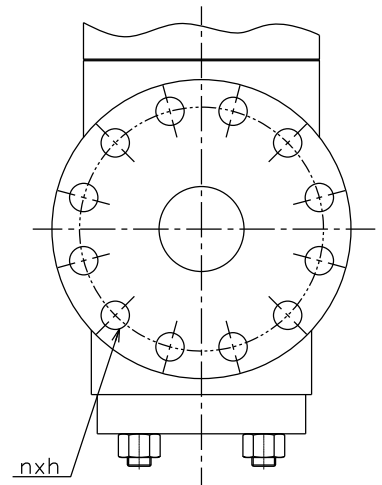
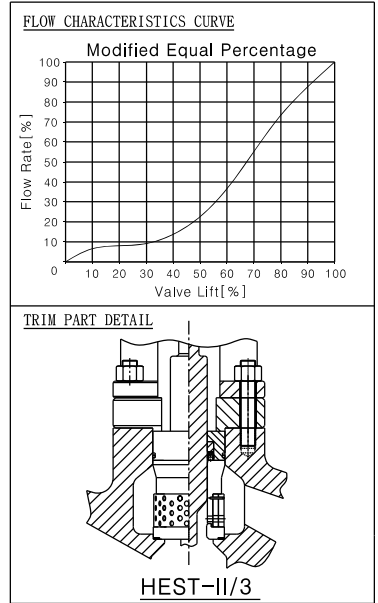
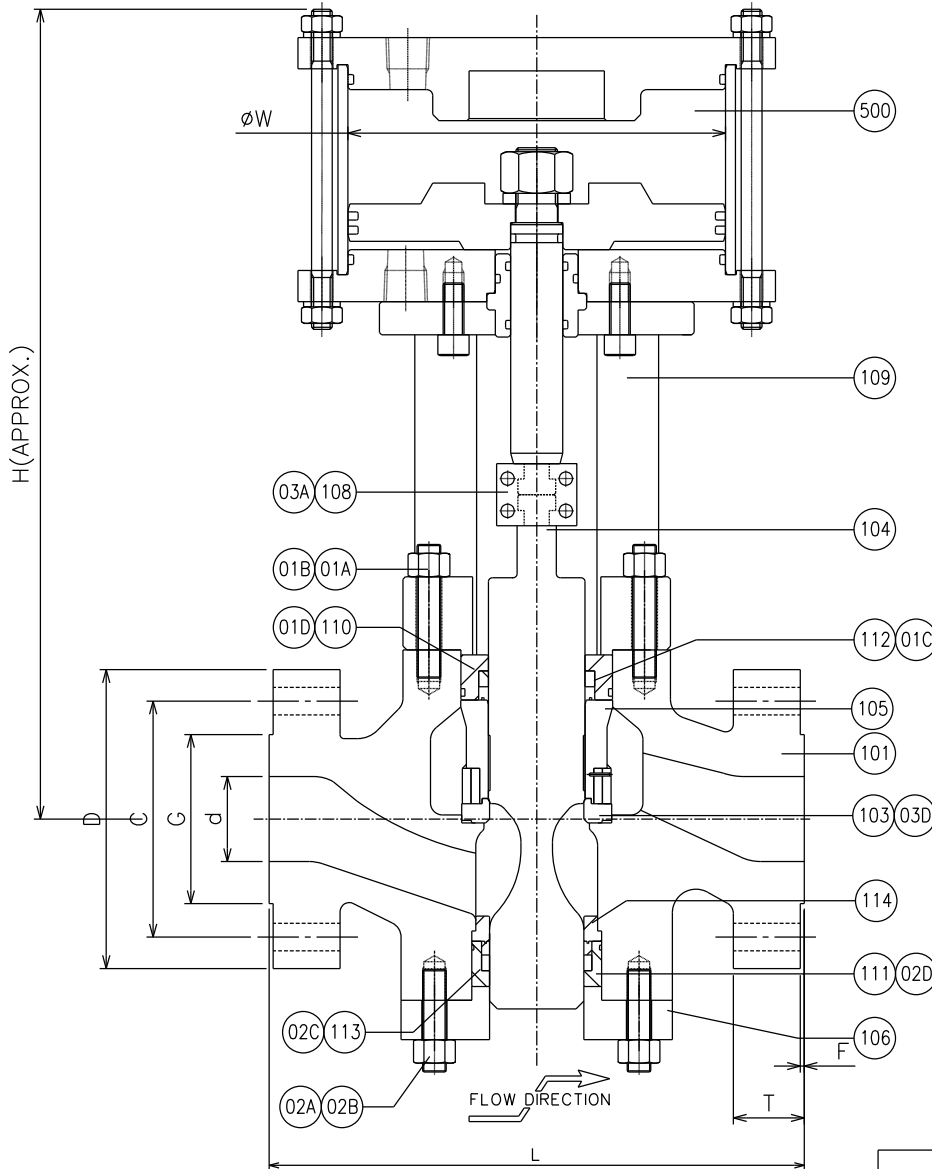
- End connection option

Raised face : R
Ring / tongue Joint : T
Lens Joint : L
Hub connector Joint : H

- Valve body material option

Carbon steel : A
 A216-WCB/WCC, A352-LCB/LCC, A105
High strength carbon steel : W
 WB36(15NiCuMoNb5-6-4)

KVT Special Product(Model KXB) High Pressure Quick Changeover Valve for Steel Mill Plant



DESIGN/TEST REFERENCE CODES				
WALL THICKNESS	END DIMENSION	END TO END DIMENSION	HYDROSTATIC TEST	CLOSURE TEST
ANSI B16.34	MAKER STD.	MAKER STD.	ISA-S75.19 & ANSI B16.34	FCI 70-2 & ANSI B16.104

KVT Product Code No.	SIZE (mm)	Q'TY	H (APPROX.)	L	d	G	C	D	F	T	nxh	RATED Cv	W	t (MIN WALL THICKNESS)
					END CONNECTION									
KXBP-2A-AH-RA	8" (200A)	1	1380	1010	175	269.7	438.2	552	2	134	12x55	52	-	57
KXBP-1C-AH-RA	6" (150A)	1	1160	790	132	215.9	368.3	483	2	115	8x55	40	-	48
KXBP-1B-AH-RA	5" (125A)	1	1050	670	102	268	310	380	2	85	12x36	30	-	42
KXBP-1A-AH-RA	4" (120A)	1	960	575	87	157.2	273.1	356	2	83	8x42	23	-	35

1. All the design information above will be changed without notice for design improvement.
2. Custom designed special valve is available as per request.